

Expert Fleet Management System



POWERFLEET®

Powerfleet Expert

Powerfleet® Expert is an OEM-independent, intelligent fleet management solution for **companies operating small to medium sized fleets of material handling equipment**. It is designed to make warehouse, manufacturing, distribution and retail environments safer. The easy-to-use system ensures only authorised operators are allowed to use the equipment after having completed an electronic checklist. PowerFleet® Expert is designed for simplicity: from simple installation to intuitive use and management. It delivers powerful results without consuming your time.

Powerfleet® Expert is a cloud based (SaaS) solution which utilises the site's Wi-Fi infrastructure for communication between the OC55 Keypad and the Infomatics platform.

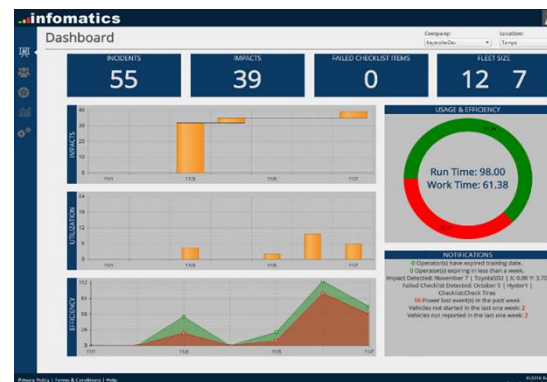
What's included:

- OC55 Keypad
- Brackets and cabling
- 5x Access Control cards



Features:

- Access Control (RFID or Pin-code)
- Configurable Electronic Safety Checklists
- Authorisation groups with/without expiry
- Impact management with/without lockouts
- Use with or without truck ignition switch
- Dashboards and Reports
- Optional seatbelt monitoring
- Predictive maintenance scheduling
- Safety notifications and scheduled reports
- Messaging by vehicle and department
- Idle Timeout, presence sensing to enforce access control
- Compatible with LPG, Diesel and Battery powered forklifts and vehicles



Email: sales@transmon.co.uk or Call 0116 260 4200 for more information



Transmon Engineering Ltd
MATERIAL HANDLING & FLEET MANAGEMENT SPECIALISTS



www.transmon.co.uk

2a The Half Croft, Syston, Leicester, LE7 1LD

Expert Fleet Management System



POWER & FLEET®

Reporting

- Automated reports
- Detailed truck information
- Configure to your needs
 - Operators
 - Vehicles
 - Impacts
 - Checklists
 - Maintenance
 - Fleet status/health
 - Etc.
- **What you need to know**
- **When you need to know it**

Infraction Reports

- Impacts
- Finger Whipping

Authorization Reports

- Authorized Users
- Operator Expiration

Maintenance Reports

- Maintenance
- Checklists
- Fleet Utilization

Summary Reports

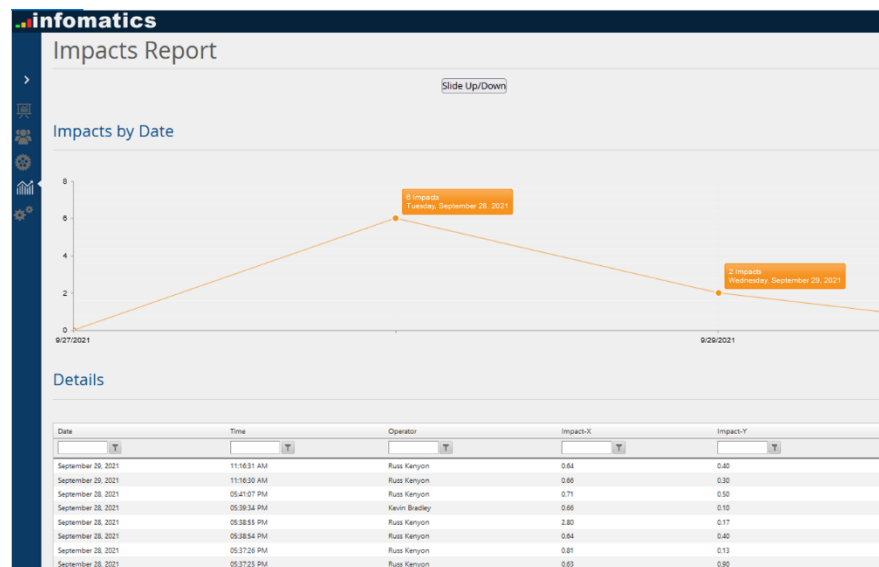
- OSHA Operator Summary
- OSHA Vehicle Summary

Troubleshooting Reports

- Vehicle Status
- All Events

Impact Management

- Manually adjustable
- With/without lockout
- Visual and audible alerts
- Automated notifications
- Settings by vehicle type
- Trigger witness cameras
- Trigger creep speed



Email: sales@transmon.co.uk or Call 0116 260 4200 for more information



Transmon Engineering Ltd
MATERIAL HANDLING & FLEET MANAGEMENT SPECIALISTS



www.transmon.co.uk

2a The Half Croft, Syston, Leicester, LE7 1LD

Expert Fleet Management System



POWERFLEET®

Benefits to you:

- Increased site safety
- Increased accountability
- Can be fitted to any vehicle
- Automated safety related notifications
- Scheduled reports
- Easy to manage

Powerfleet® Expert

OC55 SPECIFICATIONS	
Dimensions:	103.5 x 89.5 x 46.5mm
Operating Temperature Range:	-40° to +80°C
Ingress Protection:	IP67
Input Voltage:	9 to 60VDC
Power Consumption:	450mA (active mode, ~2mA (sleep mode)
Access Control Relay:	10A @ 12-48VDC
Back-up Battery Life:	5 years
Memory:	1MB flash
Display Technology:	Colour TFT
Display Dimensions:	92 x 100 x 55mm
Display Resolution:	320 x 240 pixels
Status LEDs:	1
Keys (numeric):	5 (10/2); (other): Start / Stop (power on)
I/O:	Analog: 0/1 Digital: 3
Accelerometer:	3 axis (reporting X and Y), External Accelerometer support
Regulatory Certificates:	ISO9000, RoHS, CE, FCC Part 15
Antenna:	Internal
Wi-Fi:	2.4 and 5 GHz
Encryption:	Open, WP64 and 128, TPA1-TKIP, WPA2-AES
PIN Code Entry:	Yes
Integral Card Reader:	HID

About Powerfleet

Has been in existence for over 30 years. Back in 1993, Powerfleet was incorporated in the USA under the name of I.D. Systems Inc., a pioneer in transponder-based fleet management systems for forklift trucks. A NASDAQ-listed company which has been trading under the name of PowerFleet since October 2019.

Business divisions – **Powerfleet® for INDUSTRIAL**, **Powerfleet® for LOGISTICS** and **Powerfleet® for VEHICLES** – offer the very latest telematics and analytical platforms for industrial forklift truck fleets, container/chassis/refrigerated transport, rented vehicle fleets and other over-the-road vehicles.

Email: sales@transmon.co.uk or Call 0116 260 4200 for more information



Transmon Engineering Ltd
MATERIAL HANDLING & FLEET MANAGEMENT SPECIALISTS



www.transmon.co.uk

2a The Half Croft, Syston, Leicester, LE7 1LD